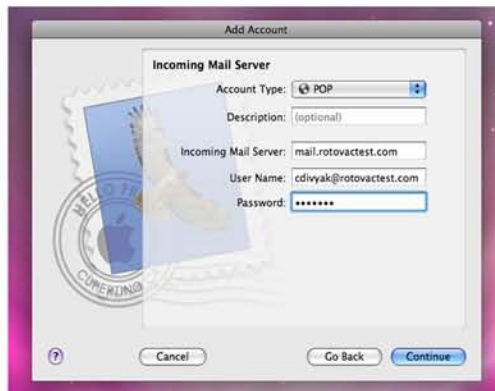


SETTING UP MAC MAIL



1. Start By Opening Mac Mail
2. click "File" and "Add New Account"
3. The Screen to the Left should pop up
4. Add you name, e-mail address, and password.
5. Click "Continue"



6. The Account Type should be "POP"
7. The incoming mail server should be: mail.yourdomain.com
8. The username HAS TO BE YOUR EMAIL ADDRESS.
9. Put Password in again
10. Click "Continue"



11. For The Outgoing mail server type: mail.yourdomain.com
12. Check "use only this server"
13. Check "Use Authentication"
14. Click "Continue"



15. Look over your setting and make sure they are all correct.
16. Check "Take Me Online Now"
17. Click "Create" and you are finished!